

QUESTION 1

Find the distance between the following points:  
 (9, -12) and (-14, -13)

QUESTION 2

What is the missing value, given the distance of 10 and the points (4, 8) and (x, 2)?

QUESTION 3

What is the location of the missing endpoint given the endpoint of (3, -9) and the midpoint of (4, 12)?

Check Point- Place answers on line

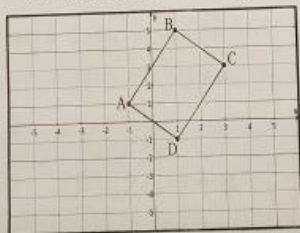
Questions 1:  $d = \sqrt{530} \approx 23.02$

Questions 2:  $x = 12, x = -4$

Questions 3:  $(5, 33)$

QUESTION 4

What is the area and perimeter of the following?



QUESTION 5

Find the coordinates of point C if C is 1:3 of the distance from point A = (-6, 5) to point B = (2, 5)

QUESTION 6

Determine if the following are parallel, perpendicular, or neither:  $2x + 6y = 12$  and  $3y = x + 15$

Check Point- Place answers on line

Questions 4:  $P = 14.6, A = 12.6$

Questions 5:  $(-4, 5)$

Questions 6: Neither

## QUESTION 7

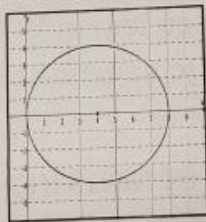
What is the equation of a line that is parallel to  $2x + y = 4$  through the point  $(2, 8)$ ?

## QUESTION 8

What is the equation of a line that is perpendicular to  $y = \frac{1}{3}x - 4$  through the point  $(-4, 8)$ ?

## QUESTION 9

What is the equation of the circle in standard form?



Check Point- Place answers on line

Questions 7:  $y = -2x + 12$

Questions 8:  $y = -3x - 4$

Questions 9:  $(x - 4)^2 + y^2 = 16$

## QUESTION 10

Write the equation of a circle center at  $(-6, 0)$  that has a radius of  $\sqrt{30}$

## QUESTION 11

Convert the following equation  $(x - 6)^2 + (y - 11)^2 = 144$  to General Form

## QUESTION 12

Convert the following equation

$$2x^2 + 2y^2 + 12x - 24y - 100 = 0$$

to Standard Form

Check Point- Place answers on line

Questions 10:  $(x + 6)^2 + y^2 = 30$

Questions 11:  $x^2 + y^2 - 12x - 22y + 13 = 0$

Questions 12:  $(x + 3)^2 + (y - 6)^2 = 95$

QUESTION 13

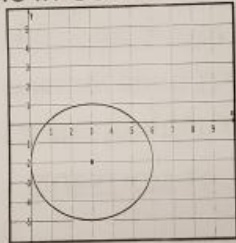
What is the equation of a circle centered at (0, -3) with a radius of 2 in General Form

QUESTION 14

Does the point (2, 5) lie inside, outside, or on the circle centered at (4,3) that has a radius of 5?

QUESTION 15

What is the equation of the circle in General Form?



Check Point- Place answers on line

Questions 13:  $x^2 + y^2 + 6y + 5 = 0$

Questions 14: Inside

Questions 15:  $x^2 + y^2 - 6x + 4y + 4 = 0$

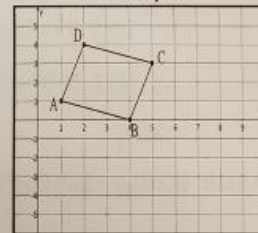
QUESTION 16

What is the location of the missing point D?



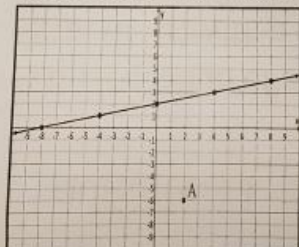
QUESTION 17

Determine the shape and prove why?



QUESTION 18

What is the shortest distance from A to the line?



Check Point- Place answers on line

Questions 16: (2, 3)

Questions 17: Square

Questions 18: 8.2